



# Essex County *News* Trail Association

Volume 26 Number 4

Fall 2007

## President's Report

Donald Curiale

### Trail Maintenance

What is the President's favorite project? The answer is trail maintenance. It is our mission to maintain, preserve and protect trails through easements, respect, and stewardship.

In 2007, the Essex County Trail Association budgeted \$50,000 for trail maintenance - our highest budget number to date! Our Executive Director, Carol Lloyd, Susanna Colloredo, Peter Britton and I worked hard to make sure we did as many projects as we could. We all made sure that they were completed and done correctly. We did our job so well that we went over budget for the FIRST time in the history of ECTA.

The organization was able to get to a project faster and quicker due to the Trail Management Plan. The Trail Management Plan allowed us to get out there and do the work. As a result, ECTA did more trail maintenance this year than ever before.

All this wonderful work has a financial price. As of October 15th, 2007, as President, I had to stop all trail maintenance. We had run out of money. We could do no more this year. How can



Marie Morency and Morgan Sperry, both of Hamilton, held a bake sale in Hamilton Plaza on October 14 to raise money for ECTA. It was fun and a great success!! (Kristal Pooler)

you help? Attend our fundraisers. Renew your membership early and give a membership as a gift. You can make sure all your friends are members of ECTA. You can hold a Bake Sale for us. You can ask your family members to join your favorite organization. You can support us however you can! We truly appreciate it.

ECTA would like to thank

Chairperson of the Board of Directors, Susanna Colloredo, for her generosity. Susanna has offered to personally pay for a new culvert behind Pingree School to relieve flooding. She has also offered to pay for mowing in the same area. On behalf of the membership of ECTA, thank you.

*continued on page 2*

*The Essex County Trail Association is dedicated to the preservation and maintenance of open trails in our local communities for the purpose of passive recreation and the benefit of the environment. The ECTA works to build coalitions with national and local associations, to serve as liaison between membership and landowners, and to encourage responsible trail use.*

**Visit [www.ectaonline.org](http://www.ectaonline.org)**

## ECTA Board of Directors

Susanna Colloredo, Chair

Don Curiale	Joseph Sandulli
Ellen Alden	Arlene Maginn
Susie Banta	Katy Redmond
Leslie Brooks	Leslie Brooks
Ann Getchell	Abby Jackson
Nady Peters	Kristal Pooler

## ECTA Officers

President	Donald Curiale
Executive Director	Carol Lloyd
1st Vice President	Katrina Redmond
2nd Vice President	Arlene Maginn
Treasurer	Liz Wheaton
Secretary	Marianne Lynch
Membership	Judy Gregg

## ECTA Area Representatives

### Essex

Kay Joseph 768-6275

### Ipswich

Augusta Macrokanis 356-1047  
Rolanda Dane 356-6524

### Hamilton

Bea Britton 468-2733  
Sue McLaughlin 468-7715  
Susie Richey 468-4205  
Arlene Maginn 468-4644  
Lucy Pingree 468-7942

### Topsfield

Abigail Jackson 887-6314  
Elaine Robson 887-8789  
Kathie Tremblay 887-8855

### Wenham

Beverly Granz 777-3375  
Deborah Stanton 762-8434

### West Newbury

George & Nancy McGowan 363-1877  
Felicity Beech

## ECTA Board of Advisors

Stu Thorne	Don Greenough
Scott Solombrino	Bruce Corwin
Nancy Merrill	Al Craig
Jim MacDougall	Lily Rice Hsia
Lois Cheston	Barbara Ostberg
Katrina Hart	Peter Britton
Ted Raymond	Heidi Hargadon
Susan Lawrence	Don Little
Gerry Kenney	Camilla Rich
Peter Campot	John Pingree
David Santomena	
Wayne Castonguay	
Rick Silverman	

### Trail Advisor

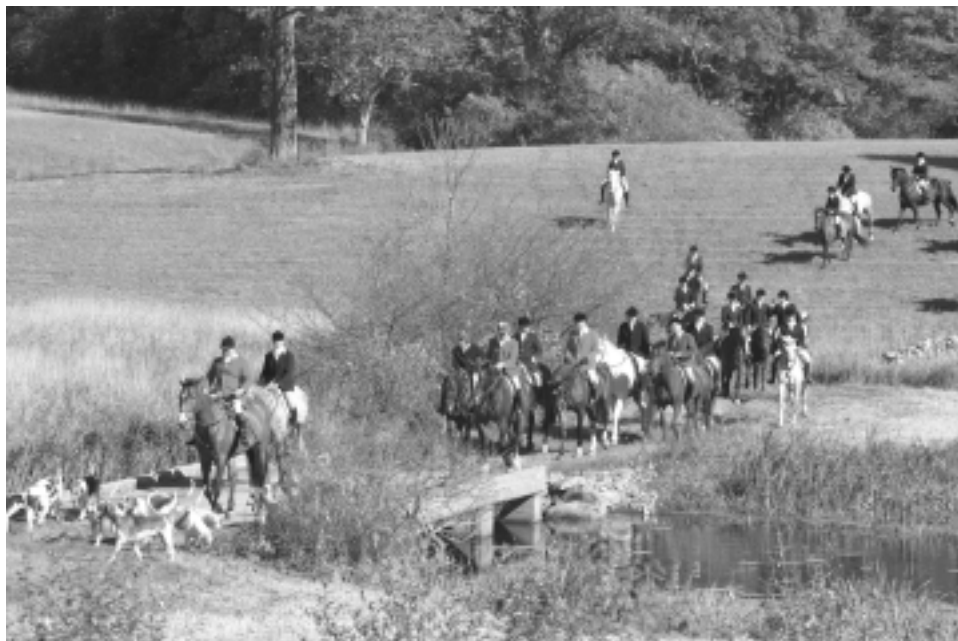
Holly Pulsifer

### Legal Advisor

Dorothy Stookey

### Newsletter

Pam Mansfield



*Riding to the hounds through the Barrowy property to benefit ECTA.*

*Photo by Emile Bellott. To see or order photos -*

[www.dotphoto.com](http://www.dotphoto.com) (username: emilephoto - guest password: pacifica)

## Fundraisers

### Taste of Ipswich

On October 2, 2007, ECTA and the YMCA hosted a Taste of Ipswich at Turner Hill. There were over 300 people who enjoyed delicious food from 16 local restaurants. These generous restaurants donated their food and time to the event. Guests sampled wines from all over the world as well as well-made martinis.

ECTA wishes to thank Turner Hill, the YMCA, the wine vendors, the restaurants, and guests for their support. The Event raised approximately \$6000 for ECTA.

### Champagne Hunt

On October 21st, 2007, Mr. Robert Johnston and Francesca Orsini hosted a Myopia Hunt and Champagne Breakfast for ECTA. There were 28 riders who enjoyed a 2 1/2 hour hunt and, afterwards, feasted on shrimp, Shepherd's Pie, champagne, sausages and other delights. The event raised over \$9000. We sincerely thank Bob and Francesca for their second,

successful, annual fundraiser for ECTA. Kudos!!!!

### Poker Ramble

Kay Joseph, Sue McLaughlin and their trusty volunteers held their Annual Poker Ramble through Bradley Palmer State Park. Over 81 horses and riders and one walker attended this fun event which raised over \$1,800. Thank you all for your hard work. I am so grateful.

### Run for the Trails

Carol Lloyd successfully hosted the 3rd Annual ECTA Run for the Trails on Saturday, October 27, 2007. The runners ran through Waldingfield and Appleton Farms in a 5 K and 10 K race. It was exciting and fun for all. Once again, ECTA thanks the runners and volunteers for their support. ECTA also thanks EBSCO, AJF and Associates, Don Greenough, Manchester Athletic Club, Green Coastal Grocer, Brinck Lowery, and Susie Banta.

# Champagne Breakfast Hunt Benefit at True Vine Farm

*Pamela Mansfield-Loomis.*

Subscribers to the Myopia Hunt and ECTA members enjoyed a perfect October day for riding to the hounds while also donating generously to benefit the Essex County trail system. Peak foliage, a clear blue sky, and manicured lawns formed a beautiful backdrop for Bob Johnston's private Champagne Breakfast Hunt at True Vine Farm, where riders in traditional hunt attire enjoyed a stirrup cup and a toast to the trails. Myopia hounds sang excitedly while the huntsman signaled them to find the fox scent to Sagamore Hill and BioLabs, and along both public and private trails.

Upon the field's return to True Vine Farm, the riders followed the hounds over several natural jumps constructed for the hunt on land which once served as a polo field. The appreciative audience who had come to join the brunch was delighted by the jumping exhibition, and by the wonderful meal that followed on the patio.

This is the second year that Bob has graciously organized a private hunt to raise funds for the ECTA. This fall, he asked ECTA to earmark the funds for repairs to a specific trail in Bradley Palmer State Park that leads to the highest elevation in Bradley Palmer, Moon Hill. "The trail to Moon Hill is eroded and so rocky that it's a serious safety issue," Bob said. "Government funding doesn't maintain these trails. Without private donations or non-profit organizations like ECTA, we could lose these trails or have serious safety hazards for people and animals."

The sharp rocky trials cause painful stone bruises to horses' hooves, not to mention making it difficult to for hikers to walk. "Hikers, joggers and equestrians find it extremely challenging going up the trail."

Bob has owned property in the Hamilton area for more than 20 years, and has been a Myopia subscriber and ECTA member for "as long as I can remember."

He purchased the farm abutting his previous residence three years ago. He named it True Vine Farm because, he says, "The location of the farm is an important hub to the best trails in Essex County. To the north is Appleton Farms, to the south is Sagamore Hill, to the east is Myopia Hunt Club and to the west is Groton House the site of world class horse trials." The trails eventually lead to Bradley Palmer State Park and the many other trails that riders, walkers, and mountain bikers enjoy.

Bob's picturesque home and setting were enhanced by the design skills of partner Francesca Orsini, a noted New York City interior designer and



*Top: Bob Johnston presents funds to ECTA president Don Curiale; Middle: Riders and hounds gather before the ECTA banner on True Vine Farm; Bottom: Bob Johnston and Russell Clarke (past MFH) enjoy cigars after Russell's famous Lighthouse Punch.*

*Continued on page 6*



*Checking in before heading out on the trails, a horse stops to greet ECTA Area Rep Rolanda Dane.*



*Sally Soucy hands out the first envelope with a playing card to a pair of riders.*



*Sue Knowles and family opted for bike riding on the trails this time.*



*Enjoying the sunshine on a mowed trail entering Patton's Green Meadow Farm.*



*Stopping to drink in a pond along the way through Britton's property.*



*Though riders went out individually, in pairs, or with just three or four riders, several groups seemed to come down this hill all at the same time. It was a beautiful ride through some spectacular trails.*



# Poker Ramble a Ride in the Park

*Kay Joseph*

The weather was beautiful on Sunday, October 14<sup>th</sup> for the annual Poker Ramble trail ride and walk at Bradley Palmer and Willowdale State Parks. Part of the ride was on private land with the permission of the Britton's and the Patton's. Thank you so much for this.

We had 81 equestrians and two walkers as well as three bicycles for a day on the trails to raise funds for trail repair. There was a short loop of five miles in Bradley Palmer and a longer loop which was a total of 15 miles including Willowdale State Park. This year we had a police officer helping the riders cross Topsfield Road. Everyone appreciated this extra safety measure.

Coffee and donuts were served at check in and a lunch of fried chicken, salads, and dessert was waiting for everyone at the end of the event.

Winners of the best Poker hands were: \$40-Adam Cropper; \$30- Janet Egan; Writing set - Suzanne Kelly; Shaving Bag - Joe Sandulli, Cosmetic Bag - Paula Harmon; Lighted Key Chain - Anna Garvel. Congratulations!

Our Volunteers are the best. Rolanda Dane - trail marking and unmarking, AM checkout; Judi Milano - trail marking; Rick Loomis - trailer parking; Deborah Stanton - morning trail check, unmarking; Ed Cugno - street crossing and bridge crossing assistance; Elaine Robson - serving lunch, unmarking trails; Sally Soucy - poker judge; Sue McLaughlin and

Kay L Joseph - Co-chairs. Special thanks goes to the donators to our event: Shaws Supermarket in Beverly, Essex Seafood, Pale Horse Designs, Joe Sandulli, Karen & Bill DeNoia and Don Curiale.



*Reaching into the bucket for an envelope while mounted proved to be one of the most difficult tasks, but this horse patiently obliged.*



*Crossing from Willowdale with police assistance made it easier for those who rode the long route of 15 miles.*



*Lunch is served while Sue McLaughlin helps check for the winning poker hands.*



*The Wongs ride again - three generations represent the ECTA Family Members.*



*Deborah Stanton (left) preparing to ride out for the second time to remove the markers placed by Judi Milano (right) who marked the trails that made it such a great day.*

# Goin' South – Southern Pines, NC

*Pamela Mansfield-Loomis*

So many ECTA members head south for winter, we were curious to know what are the trails like and why, for instance, certain areas are so attractive to our active members. What could possibly take them away from our frozen trails here in Essex County?

Southern Pines, North Carolina area is the winter home of ECTA members Amy Bresky, George and Nancy McGowen, and Maureen and Joe Wurzel, as well as several others from our area. Amy and the Wurzels purchased a farm together six years ago. While driving south this fall, Amy explained, "What drew us there in the first place was that the area has a reputation for being a great place to have horses, but I didn't quite know why."

After visiting a friend who lived there, she realized that once she turned

off the highway onto Youngs Road, she entered a completely different world of "farm after farm. The minimum lot size for a horse farm is ten acres, though there are a few smaller ones that were grandfathered in." There are deeded easements between some farms and most properties have a perimeter fence. She often rides around and between the farms, as most landowners are very gracious about letting people ride through if they are not intrusive.

But the main attraction for horse people is a conservation jewel. The Walthour-Moss Foundation, with 3500 acres, was purchased by a prominent local foxhunting family in the 1960s, and is preserved permanently just for horseback riding. It is closed to all but the hunt on three mornings a week, but otherwise frequented by riders

from the surrounding area. A key adjoining 60 acre parcel on the edge of the Foundation was purchased by the Sand Hills Alliance Land Trust (SALT) through community donations, which is a similar organization to Essex County Greenbelt Association. Amy and the Wurzels can hack there easily from home, as it surrounded by farms on all sides.

The nearly perfect footing of sand and pine needles makes it possible for unshod horses to be ridden there. "I'm completely spoiled because there are so few rocks," said Amy, who rides practically every day – more than she does when in New England, she admits.

She also enjoys the Weymouth Woods, a nearly 900-acre state-owned park to which most riders contribute funds. The forests of longleaf pine

*continued page 11*

---

## ***Champagne Hunt Benefits ECTA***

*continued from page 3*

past Master of Fox Hounds (MFH) of Rombout Hunt. The home is graced with portraits of foxhounds and hunting scenes. The couple also subscribes to the Cheshire Hunt and travel to Pennsylvania to ride.

Foxhunting is a very traditional sport that, without the cooperation of so many neighboring landowners, Bob says, couldn't happen. The sight of the hunt, hounds working and the classical beauty of the horses and riders going through the countryside is beautiful to watch.

"We need the support of our landowners," he said, "Or the Essex Country trial system would disappear."

Prior to the Champagne breakfast, Bob presented to ECTA President Don Curiale over ten thousand dollars of donations from riders and patrons. He thanked everyone for participating and thanked Donald V. Little, MFH of the Myopia Hunt for allowing the use of the Myopia hounds.



He also thankfully acknowledged the landowners of Essex County for their generous cooperation in allowing equestrians to ride on one of the best trail systems in America.

*Champagne Breakfast - Photo by Emile Bellott*  
[www.dotphoto.com](http://www.dotphoto.com) (username: emilephoto - guest password: pacifica)

# West Newbury Update

*Felicity Beech, Area Representative*

In West Newbury, ECTA now holds seven trail easements. These together add about two miles of trails across private land to some fifteen miles of trails on public property. The significance of our easements is bigger than might at first appear.

Like other towns with a more mature trail network, West Newbury offers some beautiful scenery and a number of potential routes that could be built into a cohesive system. The community also has a record of actively protecting its open space, and voters continue to support the purchase of land for this purpose.

Most recently this was evidenced in the joint purchase of 21 acres of Indian Hill with Essex County Greenbelt Association. This was made possible through the executors of Edward and Winifred Moseley (part of Maudslay's Moseley family) who wanted to preserve its charm and provide public access. This access will include trails that offer spectacular views of rolling fields (mostly under conservation restrictions), mature woodland and the Indian Hill Reservoir.

West Newbury's Open Space Committee is very active in identifying trails that traverse or could traverse new developments and the Planning Board routinely mandates trails to be included in the early stages of the permitting process. Currently there are three developments where trails totaling some three miles will be required and where ECTA hopes to hold the easements.

The role of ECTA's representatives in town has been that of educating land owners about the significance of the trail links they might provide and the different options for access that might be appropriate for their situation. According to Ellen Alden, board member "Our focus is on building links that connect with the town-owned

trails, primarily those at Pipestave, Millpond and Riverbend. We are trying to connect the dots! If we were able to persuade just five more landowners to agree to easements, we could complete new loops around some of the nicest parts of town. After that," she said, "Don Bourquard, our resident expert on trails, past, present and future, has another ten miles just waiting in the wings for an opportune moment to fit in to our plan for a fabulous trail system."

From a distance, West Newbury may appear to be moving slowly but close up there is a lot of action. Sometimes it feels like one step forward, then two steps back when a landowner decides "not now." But with optimism and persistence we are beginning to see our vision appear on the map. What else would we wish for? More ECTA members in town to support our efforts.



*West Newbury resident and ECTA member, Cindy Foote with her dog on one of the public trails in the Millpond area that is also open to horses.*

---

## Trail Tips to Remember

*Susan McLaughlin, Hamilton Area Representative*

Attention riders- When you trailer your horse somewhere to ride PLEASE clean up all manure and hay when you leave the parking area. It only takes a few minutes and it makes things more pleasant for others using the area. Thank you to the riders who have picked up after not only their own horses but the droppings that were left behind by others.

When walking on trails, keep a plastic grocery bag in your pocket. It comes in handy to pick up trash along the way or to clean up after your dog.

Hunting season is here. Please be aware of the various types of hunting that are allowed in certain areas when you are in the woods this fall. Stay out of areas that are posted. Hunting is not allowed on Sundays.

## Trail Alert

It has come to ECTA's attention that many horseback riders are riding through Appleton Farms and other trails without the proper tags or no tag at all. Please be warned that you may be asked to leave the trail if this is the case. If you need another tag, email [Judygregg@aol.com](mailto:Judygregg@aol.com) Please cooperate with the landowner's requests. Thank you so much for your understanding and cooperation.



*ECTA Fall Foliage Ride  
at Waldingfield  
(Ipswich, MA)  
Sunday  
October 28, 2007*



# Member Profile – Judy Milano

*Pamela Mansfield-Loomis.*

Anyone who participated in this year's Poker Ramble had the good fortune of glimpsing how Judi Milano envisions the trails from her saddle. Judi planned and marked the route that opened whole new vistas for both member riders and other participants, and exposed them to spectacular scenery most had never seen. And, after marking trails the day before, she returned on the day of the popular Poker Ramble to ride the trails again with her 18-year-old Quarter Horse mare Shilah.

Judi never tires of trail riding, often going three or four times a week when weather permits, or spending vacations in Vermont traversing the Green Mountain Horse Association (GMHA) trails. She has ridden in the GMHA 100-mile and the Maine 100-mile and has made a lot of friends among ECTA members who also have years of riding memories in Vermont with her. "The joke is, we won't trade in our saddle pads until we have four thousand miles on them," she says.

Her passion was enough to inspire motorcycle enthusiast and husband, Joe Dailey, to take riding lessons and join her. Now he enjoys riding English on his paint, Tonto, and the couple aptly represented trail riding and ECTA in this summer's fashion show at the Fidelity Investments Jumper Classic before a large audience. Judi represented the Western trailrider, and Joe represented the English.

Showmanship comes naturally to Judi, who has ridden professionally in many parades in the Boston area. After acquiring a sterling silver parade saddle, she and a friend who also had a silver saddle would lead the Grand Marshall in the Needham and the Wakefield Fourth of July Parades for many years. She also had the coveted job of working on the legendary children's television program, "Boomtown," with Rex Trailer and the Palomino whose T.V. name was

"Goldrush." Judi trained and owned the young equine star and leased him to Rex for all the Boomtown television shows and personal appearances from 1969-1980. Judi showed the same horse under his real name of Golden Dream on the New England show circuit, garnering three separate year end championships in Palomino Pleasure Horse.

Creative in everything she does, she has taken her experience with Western riding, and with art and fashion design, to a new direction, painting a succession of more than a dozen watercolors she has named her "Cowboy Series." Other themes over the years have included outdoor sports such as fishing and horseracing, as well as botanicals and landscapes. An exhibit of her paintings is



open to the public at Boxford Village Library until January 5, 2008.

A long-time artist and professional framer, she has generously donated several paintings to ECTA silent auctions, helping to support the organization she joined as soon as the applications for membership came out.

Judi and friends "all joined right away," she says, "when ECTA first started, and when it was originally thought to be crucial to save the trails." The friends she made when she first moved to Topsfield in the 1960s – Gail Wong and Bunny Nutter - intro-



duced her and her daughters to the local 4H.

Judi has a gift for remembering trails, so can easily traverse the network through Essex County. Years ago, everyone was wary of getting lost in Willowdale State Forest, "where every corner looks the same and there are no landmarks." She recalls a couple being lost there once for seven hours. Now with the new maps and numbered markers throughout Willowdale, it is almost impossible to get lost. However, she still advises riders to carry a cell phone, compass, map, and even GPS for long treks.

Judi and husband Joe have traveled to ride on the trails around Aiken, SC, Southern Pines, NC, as well as the Memorial Weekend and Fall Foliage rides at GMHA, but Essex County trails are home to these Boxford residents who are also active in the Boxford Trails Association, BTA/BOLT.

"ECTA has been instrumental in keeping Bradley Palmer trails open. They've done so much recently, with all the work done on the trails that used to be muddy and rocky. Now it's so wonderful for trail riders, bikers and walkers. The beaver deceivers have removed much of the water that covered some of the trails, and the gravel resurfacing has made the trails a joy to ride on."

*Middle photo - Judi and Joe at GMHA. NKG Photo.*



*A trail in Pingree Reservation showing naturally formed eskers. Article and photo courtesy of Essex County Greenbelt Association. For a map of Pingree Reservation, visit [www.ecga.org](http://www.ecga.org)*

## Pingree Reservation

*136 acres protected in 1992*

The Pingree Reservation was once part of the Pingree Estate, one of several "Great Estates" established in this area during the late 19<sup>th</sup> and early 20<sup>th</sup> centuries. The former estate house is now a private, co-ed day school. Several trails traverse the property, leading visitors through a lovely forested upland of beech trees and pines. A red maple swamp boasts vibrantly colored leaves in the fall and serves to support the surrounding wetland and Black Brook.

Pingree Reservation hosts a remarkable series of eskers. These uncommon glacial formations may at first look like a strange arrangement of railroad embankments. Actually, they are ancient riverbeds, formed when the mountains of ice melted, creating rivers along weak zones. Silt and rocks were laid down along the rivers' narrow paths, and eventually streambeds were built up above the level of ground on which the glaciers rested. After the retaining ice walls melted away, these streambeds were left behind, recognizable as the raised winding ridges we see today.

## ECTA SILVER Anniversary Party

The Essex County Trail Association held a 25th Anniversary/Silent Auction Cocktail Party on December 1 at the home of Josh Lerner and Wendy Wood in Hamilton. Many, many thanks to Josh and Wendy for their hospitality.

The party was our major fundraiser for the year. We desperately needed this type of member support in order to increase our trail maintenance budget for next year.

Our heartfelt thanks to our wonderful members for their support and generosity, and our thanks to Senator Bruce Tarr for joining us and presenting ECTA with a special citation from the State Senate. Thank you also to the many people and businesses who donated items and services.

The photos show just how cheerfully ECTA supporters came to celebrate the 25th year of their trail organization. These are the faces of generosity and the spirit of ECTA, which is to preserve, protect, and maintain our local trails.

Photos will be posted soon on [www.ectaonline.com](http://www.ectaonline.com).

Wishing you all a happy holiday season and a bright and cheerful new year, our 26th is just ahead!

---

### *Goin' South continued from page 6*

continued trees, with tall ramrod straight trunks and high branches, require controlled burning to remove undergrowth and improve the soil nutrients. The pine needles – sometimes as long as 18 inches – get very deep and are often removed and used in gardens, instead of bark mulch. The sandy soil can also be very deep, and can easily be eroded by the rain. The Foundation has installed water bars to slow and redirect the running water to the sides of the trails, easing erosion.

There is a sense of community shared by the neighboring equestrians of every discipline, with a page of the Sunday paper devoted to equestrian activities. While most trails remain open to horses, occasionally they are closed when a new owner moves in, in which case a neighbor might reroute the trail to their property. "Whenever a path needs work, someone might go up to the homeowner and offer to clear it," says Amy, who says she found herself "immediately comfortable around the

horse people. And I didn't even get to tell you about the Carolina Horse Park. It's just a twenty minute drive and there are a lot of activities there as well, from big horse trials and dressage shows to fun schooling days." If you're missing trail riding this winter and can't get away to Southern Pines, The Walthour-Moss Foundation, Weymouth Woods, and Carolina Horse Park all have websites to visit from home.

## *ECTA SILVER Anniversary Party*



*Inside:  
Senator Bruce  
Tarr presents  
ECTA with a Cita-  
tion from the Mas-  
sachusetts State  
Senate at the 25th  
Anniversary  
Cocktail Party*



**Essex County Trail Association  
Post Office Box 358  
Hamilton, MA 01936**

